

603-668-6315

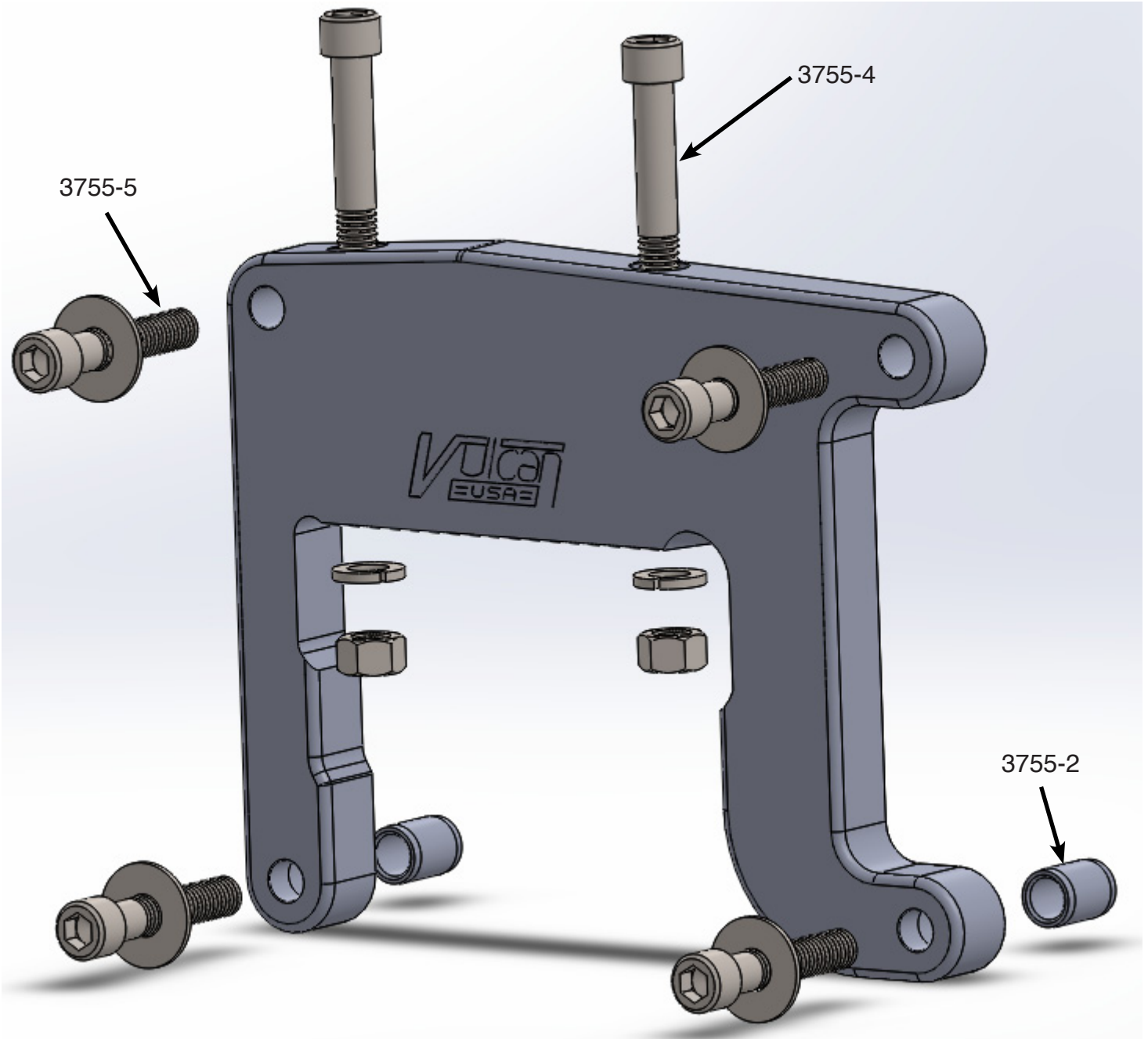


WWW.VULCANWORKS.NET

## Twin Cam-88 Adapter Plate #3755A

3755A-1	Adapter Plate
3755-2	Hollow Dowels(2)
3755-4	3/8-16 X 3-1/4" SHCS w/ nuts(2)
3755-5	3/8-16 X 2" SHCS w/ washers(4)

99-06 Twin-Cam-88 'A' Motors to Solid & Rubber Mount Frames.



Manufactured by  
Motorway Engineering  
85 Hancock St. Manchester, NH, 03101  
USA

---

---

603-668-6315

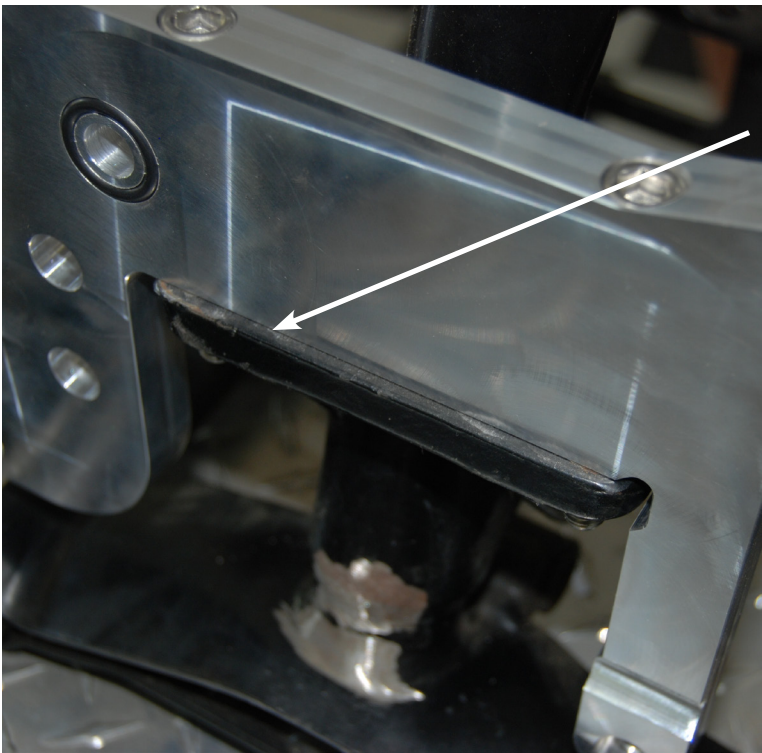


---

---

WWW.VULCANWORKS.NET

## Twin Cam-88 Adapter Plate #3755A



- Bolt Adapter plate onto frame.
- Scribe the rear motor mount using the plate as a straight edge.
- Remove the adapter plate and grind the motor mount to the scribed line.