

Dot on driver lined up with dot on cup.  
Use 'T' dot on top cup

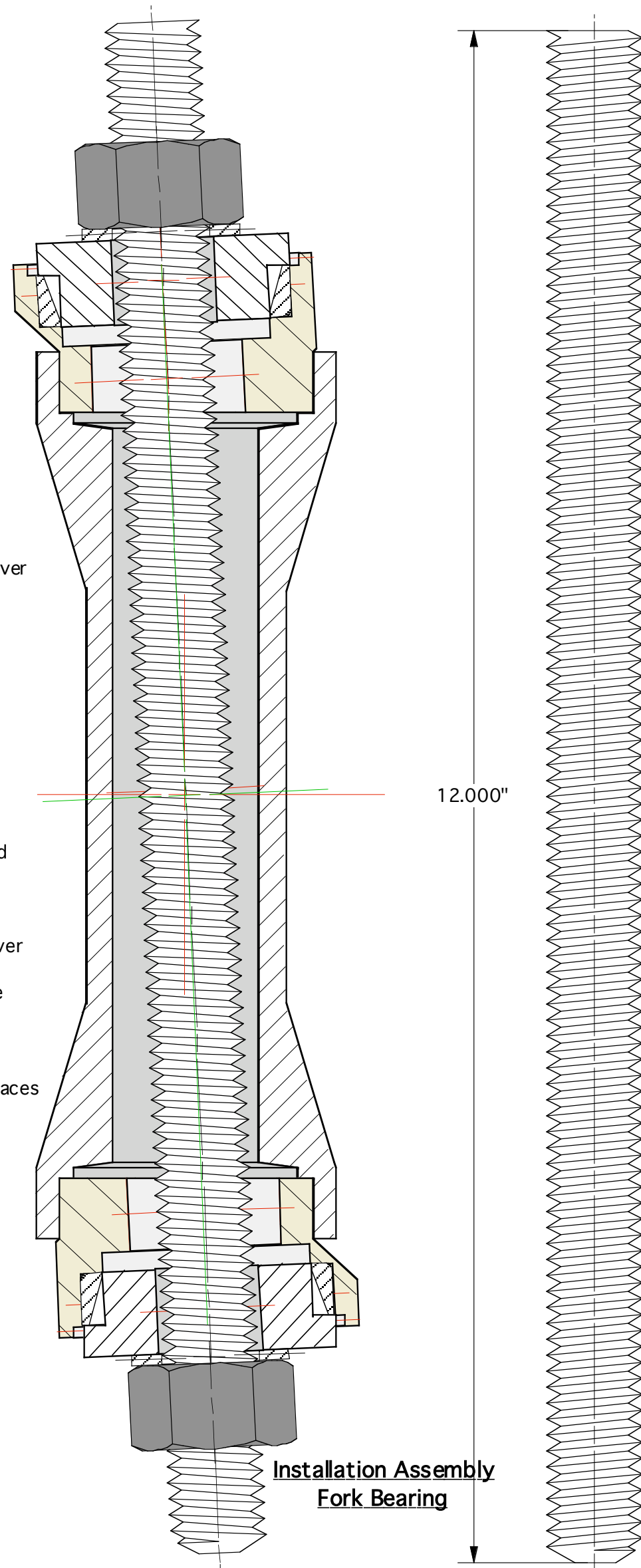
Dot on cup facing forward  
Top cup stamped with 'T'

1. Remove old races from the frame neck.
2. Install nut, thrust washer, lower cup, & driver onto threaded rod.
3. Slide this assembly into the frame neck. Install top cup, angled driver with dots facing up, thrust washer & nut.
4. Hand tighten nuts.
5. Rotate top cup so the stamped dot is facing forward.
6. Rotate the driver the dot with the stamped 'T' is facing forward.
7. Do the same with the bottom cup & driver except use the dot stamped 'B' on the driver and have it facing forward.
8. Tighten both nuts are seated. Using a little grease on the threads and thrust washer will reduce the effort of installation.
9. Repeat this process to install the bearing races using the race driver.

Dot on cup facing forward  
Bottom cup stamped with 'B'

Dot on driver lined up with dot on cup.  
Use 'B' dot on bottom cup

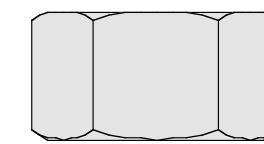
Installation Assembly  
Fork Cup



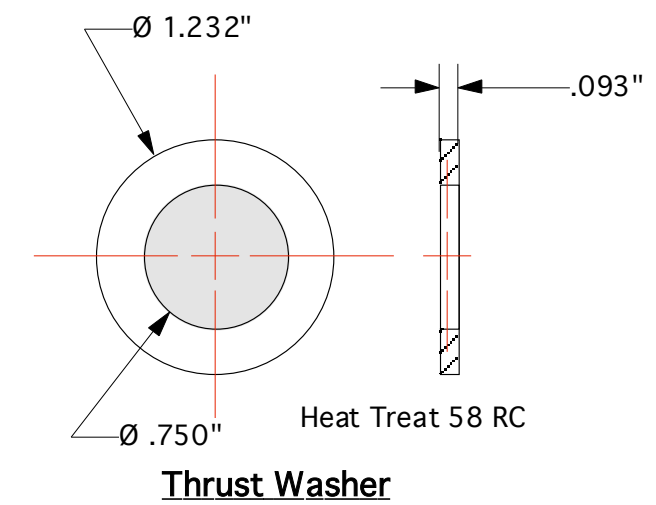
12.000"

Installation Assembly  
Fork Bearing

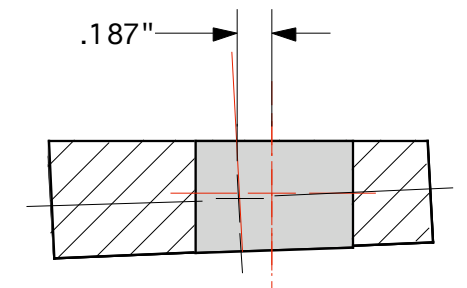
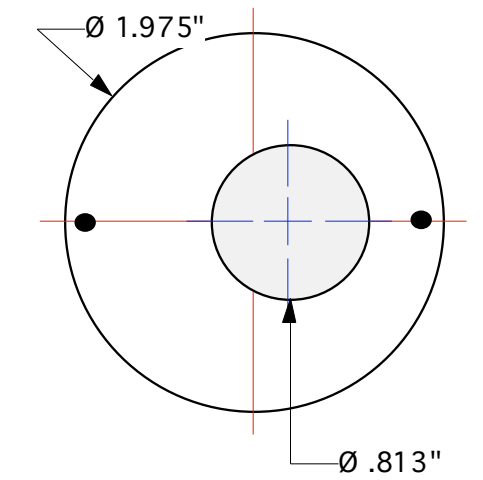
3/4 UNF, Grade 8



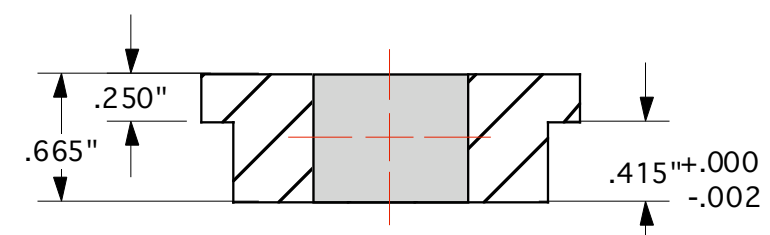
3/4" UNF Grade '8' Nut (2)



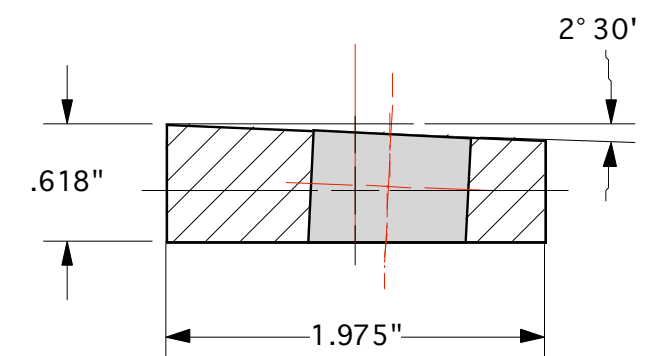
Thrust Washer



Cup Installation Tool



Bearing Race Driver



DECIMAL .005	<b>Vulcan</b> ENGINEERING COMPANY MANCHESTER • NEW HAMPSHIRE
FRACT. 1/64	
ANGULAR 1 Deg.	Title Fork Cup Tool
SHEET # 2 OF	Dwg. No. <b>3980 Assembly</b>
SCALE 1:1	85 Hancock St. 603-668-6315