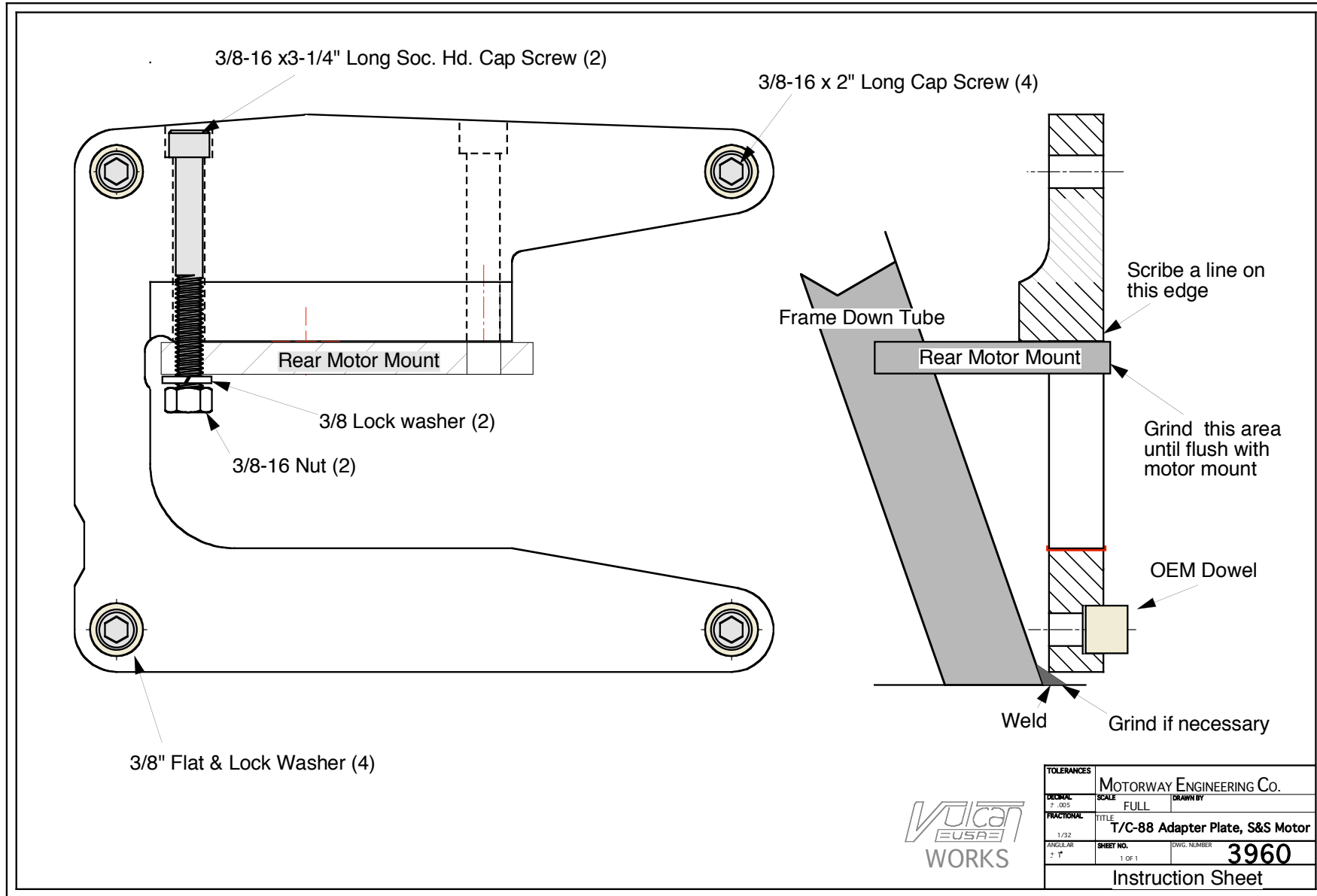


Part # 3960

www.vulcanworks.net
603-668-6315

- (1) Bolt adapter plate onto the frame
- (2) Using the forward part of the adapter plate as straight edge, scribe the rear motor mount frame bracket.
- (3) Remove adapter plate and grind the rear motor mount bracket flush with the scribe line.
- (4) Grind weld on frame down tube if necessary
- (5) When installing adapter plate to the motor, use the dowels that came with the motor, or you can use evo head bolt dowels.



TOLERANCES		MOTORWAY ENGINEERING Co.	
DECIMAL	SCALE	FULL	DRAWN BY
FRACTIONAL	TITLE	T/C-88 Adapter Plate, S&S Motor	
1/32	SHEET NO.	DWG. NUMBER	3960
ANGULAR	1 OF 1		
2°	Instruction Sheet		