

Speedo / Tach Housing
Billet Aluminum-Chrome Plated

3905	For 2-1/16 Dia. Speedo's
3906	For 2-5/8 Dia. Speedo's
3907	For 1-7/8 Dia. Speedo's
3908	1" Dia. Handle Bar Clamp



Housing shown with handle bar clamp



Housing has a 3/8-16 thread that can be bolted on any flat surface



Part #	Retail
3905	\$87.48
3906	\$94.77
3907	\$87.48
3908	\$72.00

Billet Aluminum Riser Set

Machined from solid bar stock,
black powder coated, with chrome tops.

#3941	4" Riser, Knurled Top
#3942	4" Rise, Smooth Top
#3943	6" Rise, Knurled Top
#3944	6" Rise, Smooth Top
#3945	8" Rise, Knurled Top
#3946	8" Rise, Smooth Top
#3953	10" Rise, Knurled Top
#3954	10" Rise, Smooth Top



Part #	Retail
#3941	\$145.00
#3942	\$145.00
#3943	\$153.00
#3944	\$153.00
#3945	\$163.00
#3946	\$163.00
#3953	\$172.00
#3954	\$172.00

Billet Aluminum Riser Set

Machined from solid bar stock,
chrome plated, with chrome tops.



#3947	4" Riser, Knurled Top
#3948	4" Rise, Smooth Top
#3949	6" Rise, Knurled Top
#3950	6" Rise, Smooth Top
#3951	8" Rise, Knurled Top
#3952	8" Rise, Smooth Top
#3955	10" Rise, Knurled Top
#3956	10" Rise, Smooth Top

Part #	Retail
#3947	\$145.00
#3948	\$145.00
#3949	\$153.00
#3950	\$153.00
#3951	\$163.00
#3952	\$163.00
#3955	\$172.00
#3956	\$172.00

Machine Gun Grips
Machined From 6061 Billet Aluminum

3957	Grip Set, Chromed
-------------	-------------------

Part #	Retail
3957	\$117.00



3994	Chromate Finish
-------------	-----------------

Part #	Retail
3994	\$90.00



3958	Grip Set, Satin Finish
-------------	------------------------

Part #	Retail
3958	\$90.00



Billet Headlight

Machined from billet alum., quartz halogen bulb, O-Ringed sealed, black powder coat housing, show chromed knurled tri-bar benzel and bottom mount.

#3936	Gloss Black Headlight
-------	-----------------------



Lens Covers

#3738	Smooth Tri-Bar Lens Cover
#3937	Knurled Tri-Bar Lens Cover

Part #	Retail
#3781	\$291.00
#3936	\$291.00
#3937	\$72.00
#3938	\$72.00

Billet Headlight

Machined from billet alum., quartz halogen bulb, O-Ringed sealed, show chrome housing, with smooth tri-bar benzel.

#3781	Chrome Headlight
-------	------------------



Pivot Bolt Set, FXST
Flanged Gothic Spike
4140 Tool Steel-Chrome Plated

3927	Pivot Bolt Set
------	----------------

Part #	Retail
3927	60.00



Flanged Gothic Spike Nuts
4140 Tool Steel-Chrome Plated

Part #	Size	Retail
3921	5/16-18	\$14.00
3922	5/16-24	\$14.00
3923	3/8-16	\$14.00
3924	3/8-24	\$14.00
3925	7/16-14	\$16.00
3926	7/16-20	\$16.00



Top Motor Mount Bolt Set
Flanged Gothic Spike
4140 Tool Steel-Chrome Plated

3928	Bolt Set
------	----------

Part #	Retail
3928	60.00



41mm Lower Leg Set

Billet Legs, Gloss Black Powder Coat

- Includes:**
- Chrome plated hidden axle
 - Axle cap
 - Axle adjuster
 - Chrome fender brackets
 - Chrome Caliper bracket
 - Axle cam-locs
 - Axle Spacer
 - Chrome smooth billet fork boots

3965	Lower Leg Set	84-UP B/T
------	---------------	-----------

Part #	Retail
3965	\$450.00



Billet Fork Boots, 41mm

Machined From 6061 Bar Stock
Chrome Plated



3643	Smooth Style
3635	Knurled
3966	Tall Chopper Style

Part #	Retail
3643	\$52.00
3635	\$60.00
3966	\$81.00

41mm Front Fork Set

Billet Aluminum, Candy Red Powder Coat

41mm Wide Glide Triple Set

We take our 1-1/4" thick 41mm tree set and powder coat them with a super high gloss candy red finish, then re machine ball grooves and edge accents to produce this beautiful tree set. Lower legs are red powder coated and supplied with chrome fender & caliper brackets, and chrome smooth fork cups

Includes:

- Chrome plated hidden axle
- Axle cap
- Axle adjuster
- Chrome fender brackets
- Chrome caliper bracket
- Axle cam-locs
- Axle Spacer
- Chrome smooth billet fork boots
- FXST length fork tubes
- Bushings & seal that interchange with OEM's
- Chrome headlight bracket
- Fork stem machined for OEM fork lock
- Upper fork cup
- Lower fork cup with fork stop
- Chrome crown nut & fork tube plug bolts
- Fully assembled



4000	41mm Front End	Black
------	----------------	-------

Part #	Retail
4000	\$1184.00

Replacement Billet Fork Boots



Fork Boots

Billet Aluminum-Chrome Plated

Part #	Retail
3643	\$52.00
3635	\$60.00
3966	\$81.00

41mm Front Fork Set

Billet Aluminum, Gloss Black Powder Coat

41mm Wide Glide Triple Set

We take our 1-1/4" thick 41mm tree set and powder coat them with a super high gloss black finish, then re machine ball grooves and edge accents to produce this beautiful tree set. Lower legs are black powder coated and supplied with chrome fender & caliper brackets, and chrome smooth fork cups

Includes:

- Chrome plated axle
- Axle cap
- Axle adjuster
- Chrome fender brackets
- Chrome caliper bracket
- Axle cam-locs
- Axle Spacer
- Chrome smooth billet fork boots
- FXST length fork tubes
- Bushings & seal that interchange with OEM's
- Chrome headlight bracket
- Fork stem machined for OEM fork lock
- Upper fork cup
- Lower fork cup with fork stop
- Chrome crown nut & fork tube plug bolts
- Fully assembled

3973	41mm Front End	Black
------	----------------	-------

Part #	Retail
3973	\$1184.00



Replacement Billet Fork Boots



Fork Boots

Billet Aluminum-Chrome Plated

Part #	Retail
3643	\$52.00
3635	\$60.00
3966	\$81.00

Billet Fork Boot

Billet Aluminum, Chrome Plated
Threaded For Our Front Ends

3643	41mm Smooth
3635	41mm Knurled
3639	50mm Smooth
3640	50mm Knurled

Part #	Retail
3643	\$46.00
3635	\$54.00
3639	\$62.00
3640	\$69.00



Caliper Bracket

Billet Aluminum, Chrome Plated

3628	41mm, Left Side
3629	41mm Right Side
3636	50mm, Left Side
3636DD	50mm, Right Side

Part #	Retail
3628	\$54.00
3629	\$54.00
3636	\$54.00
3636DD	\$54.00



Fender Bracket

Billet Aluminum, Chrome Plated

3630	41mm
3638	50mm

Part #	Retail
3630	\$85.00
3638	\$85.00



Front End Parts

Front Axle Assembly
Chrome Plated
For Vulcan Billet Front Ends

3673	41mm Forks
3619	50mm Forks

Part #	Retail
3673	\$54.00
3619	\$54.00



Front End Parts

Lower Leg Axle Cap
Chrome Plated
For Vulcan Billet Forks

3651	41mm & 50mm Forks
------	-------------------

Part #	Retail
3651	\$15.00



Cam-Loc's (Pr.)
Stainless Steel

3670	41mm Triple Trees
3654	50mm Triple Trees
3853	39mm Triple Trees
3854	35mm Triple Trees
3675	41mm & 50mm Axle Cam-Loc's

Part #	Retail
3670	\$24.00
3654	\$28.00
3853	\$24.00
3854	\$24.00
3675	\$24.00



41mm Wide Glide Triple Tree Set

41mm Wide Glide Triple Set

We take our 1-1/4" thick 41mm tree set and powder coat them with a super high gloss black finish, then re machine ball grooves and edge accents to produce this beautiful tree set.

3971	41mm Tree Set
------	---------------

Part #	Retail
3971	\$360.00



Triple Tree Parts

The following parts are included with this tree set;

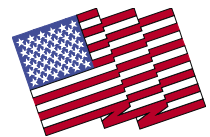
- Fork stem with machined slot for fork lock.
- Chrome plated crown nut.
- Chrome plated headlight bracket.
- Set of stainless steel cam-loc's.
- Chrome plated upper fork cup.
- Chrome plated lower fork cup with built in stop.
- Set of stainless steel fork stop cap screws.
- Set of stem locks.



**Polaris Triple Tree Set, 50mm
5 Degree Rake**



Raked Triple Tree Set
Billet Aluminum
Chrome Plated



Made In USA

3995	Tree Set	Polaris	Chrome Finish
------	----------	---------	---------------

Part #	Retail
3995	\$591.00

Replacement Fork Stem

No need to throw away your triple trees when you have a bent fork stem. These replacement fork stems are made from 4140 tool steel and press in to your bottom triple tree. These stems are exact O.E.M. replacements with the fork lock.



3979	FLST softtail, with pressed in stem
3996	FXST softtail, with pressed in stem
3997	Dyna & XL with pressed in 1" dia. stem

Part #	Retail
3979	\$36.00
3996	\$36.00
3997	\$36.00



Fork Cup & Bearing Race Installation Tool



Installs 3 degree raked & non raked fork cups, and installs fork bearing races. For B/T & XL with 1" stem bearings.

3980	Fork & bearing race tool
------	--------------------------

Part #	Retail
3980	\$72.00



3 Degree Raked Fork Cup Set
With Fork Stop Lug
Chrome Plated.

Machined from 4140 steel bar stock. Bottom bearing cup has a fork stop lug.

3961	Big Twin Fork Cup Set
3963	57-78 XL Fork Cup Set With Timken Bearing Conversion



Part #	Retail
3961	\$99.00
3963	\$143.00

3 Degree Raked Fork Cup Set
Chrome Plated.

Machined from 4140 steel bar stock.



3962	Big Twin Fork Cup Set
3964	57-78 XL Fork Cup Set With Timken Bearing Conversion

Part #	Retail
3962	\$81.00
3964	\$125.00

3 Degree Raked Fork Cup Set
Fits 1989 & Up FLST Softails

Fits 1989 and up FLST

Note; FLST has a internal fork bolt thread.

Includes 1 pair of stainless steel raked fork Cups.
1 set of neck bearings & races.
Longer fork stem

Part #	Retail
3981	\$179.00



3 Degree Raked Fork Cup Set
Fits 1989 & Up Softail & Dyna Frames

**Fits 1989 and up FXST, & 1990 and up
Dyna Wide Glide**

Note; FXST has a external stem nut thread.

Includes 1 pair of stainless steel raked fork Cups.
1 set of neck bearings & races.
Longer fork stem

Part #	Retail
3977	\$179.00



**FXR Wide Tire Swingarm
Chrome Plated**



Shown with optional swing arm support bracket & matching caliper bracket

- No. 3401 Billet aluminum brake caliper bracket, chrome plated.
- No. 3547 Swing arm support bracket, billet aluminum, chrome plated.
- No. 3548 Swing arm support bracket, with rear foot peg mounts.
- No. 3549 Pivot shaft kit, replaces 47492-89, chrome moly extra strong.



Includes

- Billet aluminum concealed axle adjusters
- Heat treated chrome moly axle
- Custom chrome plated axle nuts
- Belt guard mount
- Stainless steel axle plates

Fits stock & custom FXR frames

Accepts 180 series tires

Designed for belt or chain drive

Drive side is offset 9/16"

3424C	Billet FXR Swingarm
--------------	---------------------

Part #	Retail
3424C	\$776.00

Softail Swingarm

Billet Aluminum

Chrome Plated

Allows 200 series tire with belt drive, using a stock frame.



Includes:

- Swing arm assembly
- Axle
- Axle Nuts
- Stainless steel axle plates
- Pivot Bearings & snap rings
- Pivot Tube
- Custom Pivot Tube Bolts
- Swing arm stop

Requires a 1" Offset Fat Tire Kit # 3550

Part #	Description	Retail
3600C	1984-1999 FXST	\$1436.00
3885	2000-Up FXST	\$1436.00

Swing Arm Support Bracket Set >

Billet Aluminum-Show Chromed

With screw in Flush End Caps & rear foot peg mounts.

3548	Fits All FXR's
3548C	Fits All FXR's, Chrome

Part #	Retail
3548	\$145.80
3548C	\$172.00

Sold per pair



< Swing Arm Support Bracket Set

Billet Aluminum-Show Chromed

With screw in flush end caps.

3147	Fits All FXR's
3147C	Fits All FXR's, Chrome

Part #	Retail
3147	\$136.68
3147C	\$164.00

Sold per pair



Swing Arm Pivot Shaft Kit >

3549	Fits All FXR's
------	----------------

Part #	Retail
3549	\$40.00

Front End Parts

Front End Parts

Dampering Rod Assembly Billet Aluminum

3646	50mm Forks
3855	41mm Forks

Part #	Retail
3646	\$90.00
3855	\$82.00



50mm Fork Parts

3644	Upper, Lower Leg Bushing
3970	Fork Seal Back-Up Washer
3618	Fork Seal
3645	Lower Fork Tube Bushing

Part #	Retail
3644	\$23.00
3970	\$3.75
3618	\$15.00
3645	\$23.00



50mm Fork Tube Extensions

Stainless Steel

An easy way to lengthen 50mm forks.

3845	2" Longer
3846	3" Longer
3847	7-3/8" Longer

Part #	Retail
3845	\$86.00
3846	\$86.00
3847	\$97.00



Fork Tube Plug Set

Flush Style For All Of Our 2" Thick Trees
Chrome Plated

3650	Fork Tube Plug Bolt Set
------	-------------------------

Part #	Retail
3650	\$28.00



Crown Nuts

Chrome Plated

3649	For our 2" Thick Tree Sets
3857	For our 1-1/4" Tree Sets

Part #	Retail
3649	\$15.00
3857	\$15.00



Triple Tree Parts

Fits all of our tree sets

3967	Fork Stem, 2" thick trees
3968	Fork stem, 1-1/4" thick trees
3969	Fork Stem, pre 1984 XL trees
3151-5	Headlight Bracket

Part #	Retail
3967	\$36.00
3968	\$36.00
3969	\$36.00
3151-5	\$13.00



Fork Tube Plug Bolt, (Ea.)

Chrome Plated
With Chrome Washer, & Oil seal

3852	1977-Up, FXST, FLST, FXWG
------	---------------------------

Part #	Retail
3852	\$9.00



Fork Tube Plug, (Ea.)

Chrome Plated

3851	41mm
3432	41mm W/ 2" thick trees
3687	50mm

Part #	Retail
3851	\$9.00
3432	\$14.50
3687	\$24.00



Fork Seal Back-Up Washer (Ea.)

Stainless Steel
Replaces 45865-84

3850	Washer
------	--------

Part #	Retail
3850	\$3.20



4- Speed Big Twins, Fat Tire Kit

Includes pulley spacer, inner primary cover spacer, transmission base plate & motor sprocket.

3157	1/4	w/ Shaft Ext.
3901	1/4	w/ 25T Sprocket
3902	1/4	w/ 24T Sprocket
3708	1/2	w/ 24T Sprocket
3918	3/4	w/ 24T Sprocket
3919	1"	w/ 24T Sprocket



Part #	Retail
3157	\$163.00
3901	\$199.00
3902	\$199.00
3708	\$199.00
3918	\$218.00
3919	\$236.00

FXR Fat Tire Kit

Includes pulley spacer, fender strut spacers, & billet aluminum brake caliper bracket.



3132	.300 Offset	84-UP FXR
------	-------------	-----------

Part #	Retail
3132	\$187.00

Belt Drive Cover Set



3 Piece Cover Set
Front Pulley Cover, Rear Clutch Hub
Cover, Middle Outer Cover

These covers are machined from billet bar stock and will not throw pulleys out of balance as do spun aluminum covers.

3756	3 Pc. Set	Primo	Satin Finish
3756C	3 Pc. Set	Primo	Chrome Finish
3788	3 Pc. Set	BDL	Satin Finish
3788C	3 Pc. Set	BDL	Chrome Finish
3959	3 Pc. Set	BDL, FXR	Chrome Finish

Part #	Retail
3756	\$182.00
3756C	\$262.00
3788	\$182.00
3788C	\$262.00
3959	\$262.00

Clutch Hub Cover Has Machined Holes
To Ventilate Clutch Pack.

Billet Aluminum

With Stainless Steel Hardware



3131	1/4, 84-90	w/ Shaft Ext.
3893	1/4, 84-90	w/ 24T Sprocket
3462	1/4, 91-UP	w/ 24T Sprocket
3705	1/4, 91-UP	w/ 25T Sprocket
3467	1/2, 84-90	w/ 24T Sprocket
3422	1/2, 91-UP	w/ 24T Sprocket
3575	1/2, 91-UP	w/ 25T Sprocket
3706	3/4, 84-90	w/ 24T Sprocket
3407	3/4, 91-UP	w/ 24T Sprocket
3900	3/4, 91-UP	w/ 25T Sprocket
3707	1", 84-90	w/ 24T Sprocket
3550	1", 91-UP	w/ 24T Sprocket
3894	1", 91-UP	w/ 25T Sprocket
3888	1-1/4	w/ 25T Sprocket
3916	1-1/2	w/ 25T Sprocket

FXST Fat Tire Kit

Includes pulley spacer, inner primary cover spacer, transmission base plate & motor sprocket.



Part #	Retail
3131	\$163.00
3893	\$185.00
3462	\$185.00
3705	\$199.00
3467	\$185.00
3422	\$185.00
3575	\$199.00
3706	\$199.00
3407	\$199.00
3900	\$199.00
3707	\$218.00
3550	\$218.00
3894	\$218.00
3888	\$272.00
3916	\$272.00

Inner Primary Spacer Rings

Made from 6061 billet aluminum, not cast, for a leak free seal between the motor & the inner primary cover.

3404	1/4" Thick
3405	1/2" Thick
3406	3/4" Thick
3584	1" Thick
4038	30mm Thick
3840	1-1/4" Thick
3841	1-1/2" Thick



Wide Tire Axles

Made from 4140 tool steel, heat treated & centerless ground.

Fits The Following Swing Arms:

3583	C/S X-Drive, W/ 1 Nut
3630	T/R Rubber Mount, W/ 1 Nut
3711	Vulcan, FXR Bullet Aluminum, W/ 2 Nuts
3710	Vulcan, Softtail Billet Aluminum, W/ 2 Nuts



Part #	Retail
3404	\$32.00
3405	\$43.00
3406	\$51.00
3584	\$72.00
4038	\$83.00
3840	\$83.00
3841	\$94.00

Part #	Retail
3583	\$40.00
3630	\$40.00
3711	\$40.00
3710	\$40.00

EVO Rocker Box Set
6061 Billet Aluminum & Chrome Plated

Rocker Boxes have extra clearance for high lift cams and valve springs

Hardware Included.

3 piece design for easy removal.

O-rings Included

Sold as a front & rear set.



3224	Rocker Box Set
------	----------------

Part #	Retail
3224	\$591.00





Uses O.E.M. Gaskets

Chrome Plated Hardware Included

Rocker Box Set, T/C-88

6061 Billet Aluminum & Chrome Plated

Rocker Boxes have extra clearance for high lift cams and valve springs

3799	Rocker Box Set
------	----------------

Part #	Retail
3799	\$591.00

Use any gasket set made for T/C-88 rocker boxes.

T/C-88 Tappet Block Set

Billet Aluminum & Chrome Plated
With Stainless Steel Hardware



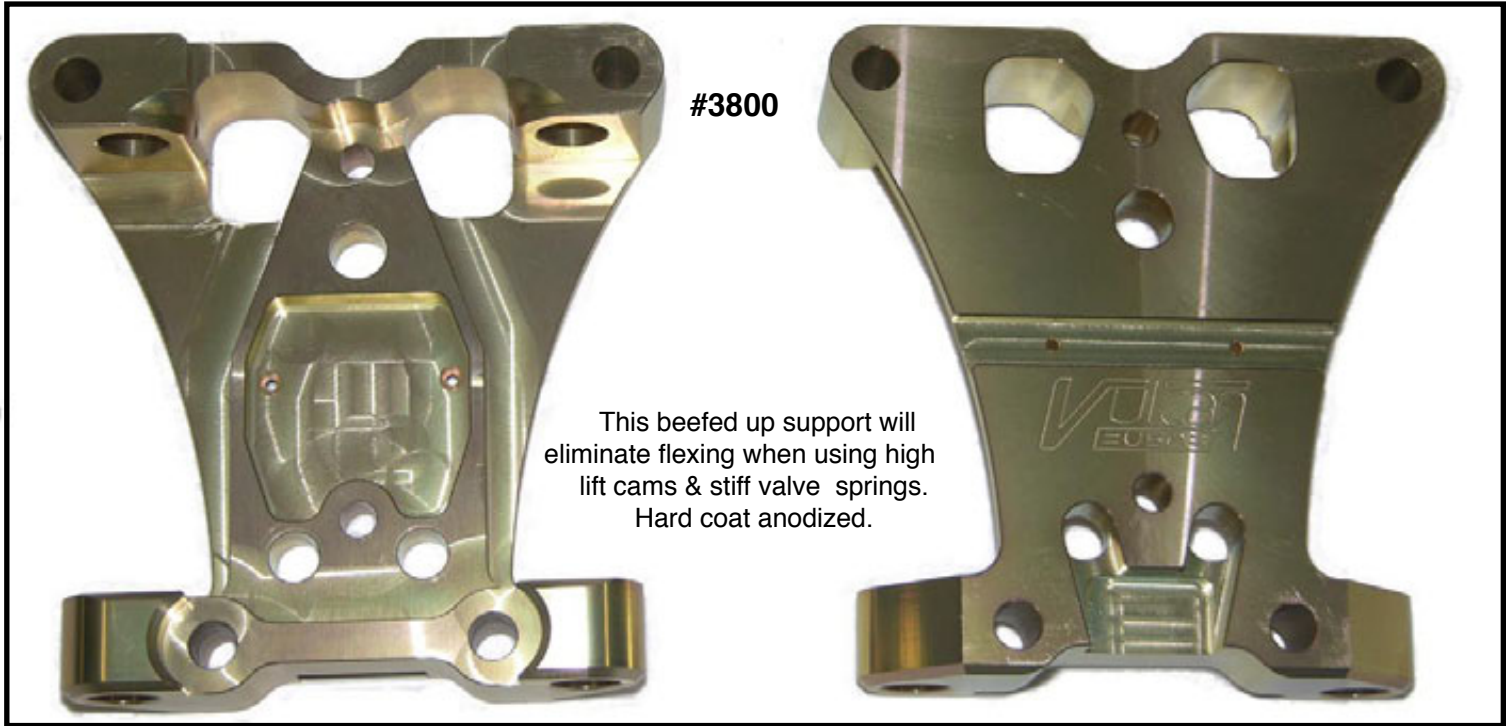
Machined with extra clearance for high lift cams.

Matches our cam cover & rocker box set.

3862	Tappet Block set
------	------------------

Part #	Retail
3862	\$255.00

Rocker Arm Support
Machined from 7075 Billet Aluminum
Fits All Twin Cam Motors



#3800

This beefed up support will eliminate flexing when using high lift cams & stiff valve springs. Hard coat anodized.

PCV Valve Housing
Billet Aluminum
Fits All Twin Cam Motors



#3801

3800	Rocker Arm Support
3801	PCV Valve Housing

Sold Ea.

Part #	Retail
3800	\$86.00
3801	\$43.00

This housing is precisely machined from billet aluminum, and doweled together for perfect alignment, O-Ringed for a leak proof seal. This unit won't suck in oil as O.R.E.M. units do.

Billet Aluminum Cam Cover
Machined from 7075 Billet Aluminum

Direct OEM replacement or can be used on any aftermarket generator style case.

Includes bushings, baffle plate & breather tube.

This cover is a beautifully machined piece that eliminates the leaks that occur with cast covers.

3121	48-69 B/T, Satin Finish
3121C	48-69 B/T, Chrome

Part #	Retail
3121	\$252.00
3121C	\$324.00



Billet Aluminum Pan Cover Set

Mat'l 6061

Machined from a 8"x6"x4" thick piece of billet allium aluminum.
Ideal for high lift cam that need extra clearance between valve springs & pan covers.

Reduces top end noise, eliminates valve cover oil leaks and dissipates heat faster than stock steel covers.

And they look gorgeous.



3139	1948-1965 B/T's	Satin Finish
3139C	1948-1965 B/T's	Chrome

Part #	Retail
3139	\$355.00
3139C	\$482.00

Dual Dyna Coil Brackets Gothic Spike

4068B	With ignition switch hole and starter button hole
4069B	Plain
4067B	With ignition switch hole

Fits all H-D's with custom top motor mount.

- Billet Aluminum
- Powered Coated Gloss Black With Machined Edges

Part #	Retail
4068B	\$116.00
4069B	\$116.00
4067B	\$116.00

All coil brackets accept single & dual tower dyna coils.
#4068 uses OEM # 71425-77 ignition switch. And our
3974 Heavy Duty starter button.



Dual Dyna Coil Brackets Gothic Spike

4068	With ignition switch hole and starter button hole
4069	Plain
4067	With Starter Button Hole

Fits all H-D's with custom top motor mount.

- Billet Aluminum
- Chrome Plated

Part #	Retail
4068	\$106.00
4069	\$106.00
4067	\$106.00

All coil brackets accept single & dual tower dyna coils.
#4068 uses OEM # 71425-77 ignition switch. And our
3974 Heavy Duty starter button.



Dual Dyna Coil Brackets

3745	With ignition switch hole and starter button hole
3791	Plain
3792	With Starter Button Hole

Fits all H-D's with custom top motor mount.

- Billet Aluminum
- Chrome Plated

Part #	Retail
3745	\$76.00
3791	\$76.00
3792	\$76.00



3745

All coil brackets accept single & dual tower dyna coils.
#3745 uses OEM # 71425-77 ignition switch. And our
3974 Heavy Duty starter button.



3791



3792

Starter Push Button Switch

Fits all of our coil brackets
15Amp, USA Made
15/32-32 UNS Thread

3974	Push Button Starter Switch
------	----------------------------

Part #	Retail
3974	\$7.50



Ignition Switch

This Ignition switch fits all of our custom coil brackets

3975	Ignition Switch (7125-77)
------	---------------------------

Part #	Retail
3975	\$17.25



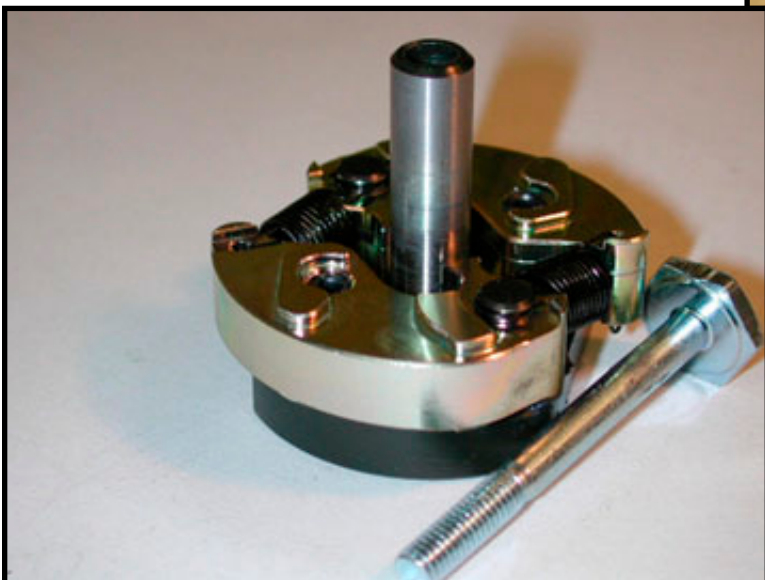
Electronic Ignition



Single & Dual Fire, Built-In Timing Light.
All Components Made In USA.
Front To Rear Cylinder Timing Accurate To
1/2 Degree.

3154	All Cone Motors
3802	Twin Cam-88 & Can be adapted to Distributor Motors

Part #	Retail
3154	\$117.00
3802	\$117.00
3117	\$81.00
3116	\$81.00



Auto Advance Mechanism

The auto advance base & shaft are one piece, machined from 4350 chrome moly tool steel, ground to .0001 accuracy.

Pivot pins are tool steel & heat treated to 58 RC. The weights are not cast, but machined from 4140 billet bar stock & heat treated. This unit is meant to last a lifetime.

3117	All Cone Motors
3116	Reverse Rotation For Distributors & T/C-88 Motors.

Billet Aluminum Distributor *Single or Dual Fire*

Housing & Cap Machined from Billet Aluminum

- Front to rear cylinder is pre-timed and accurate to 1/2°.
- Less coil dwell time, which promotes longer coil life & a hot spark at any R.P.M.
 - Can use 3 or 5 ohm coils
- Easier to install than points, has built in timing light.
- Operates on 10-17 volts. Draws less than 1/2 amp.
- Unlike Unilite ignitions, this sealed Hall Effect ignition is impervious to moisture and vibration.
- Same size as O.E.M. auto advance dist.

Tool steel heat treated autoadvance.

- All components made in USA



3110	1936-1969 B/T
3112	1957-1970 XL, And flat heads
3110-1	Replacement Module

Part #	Retail
3110	\$399.00
3112	\$399.00
3110-1	\$182.00

Distributor Parts

Distributor Hold Down Clamp Billet Aluminum

3162	1936-1969 B/T
3794	Sportster

Part #	Retail
3162	\$5.50
3794	\$5.50



**T/C-88 Cam Cover Kit,
For Gear Drive Cams**
Use with any Evo Ignition

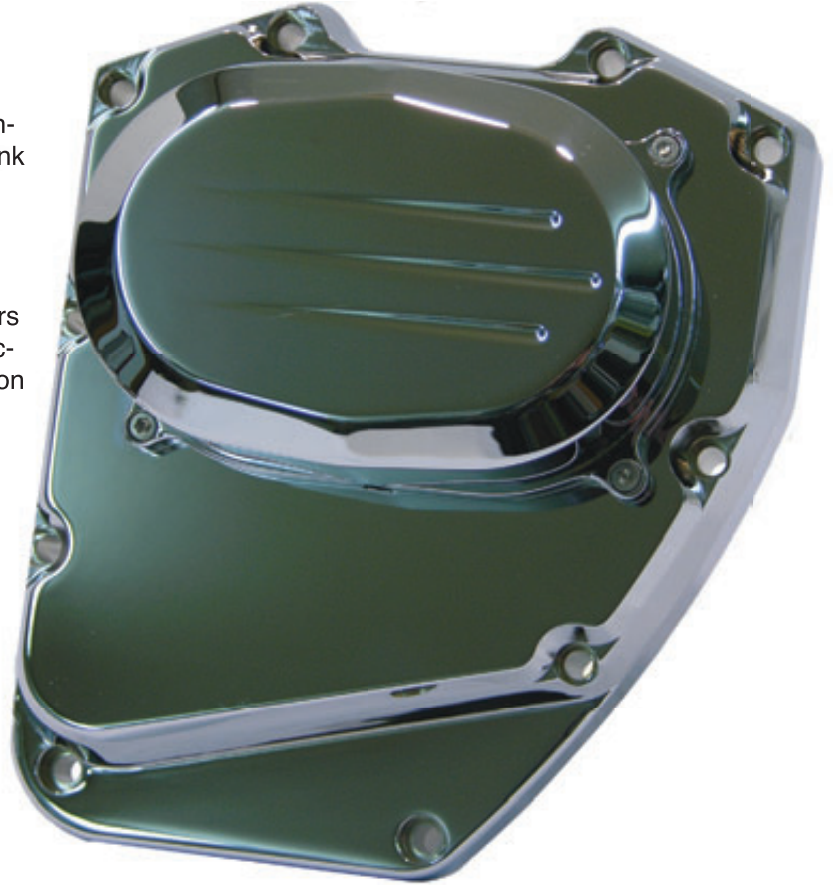
This cam cover kit lets you use any EVO style, self contained ignition system. Requires no microprocessor, crank sensor, cam angle sensor, MAP sensor, BAS sensor.

This is the solution for bike builders using T/C-88 motors in custom bikes, and don't want to use the complex factory wiring harness, and want a simple solution for ignition timing.

6061 Billet Aluminum - Chrome Plated
Made In The USA

Includes:

- Timing tool, stainless steel hardware.
- Camshaft gear for S&S gear drive cams.
- Chrome plug for crankshaft sensor hole.
- Heat treated tool steel Ignition adapter.
- Oil seal, same as OEM EVO



3886	T/C 88 Cam Cover Kit
------	----------------------

Part #	Retail
3886	\$743.00

T/C-88 Cam Cover Kit
With Ignition Conversion Kit

This cam cover kit comes with a EVO style, self contained ignition system. Requires no microprocessor, crank sensor, cam angle sensor, MAP sensor, BAS sensor.

This is the solution for bike builders using T/C-88 motors in custom bikes, and don't want to use the complex factory wiring harness, and want a simple solution for ignition timing.

6061 Billet Aluminum - Chrome Plated

Includes:

Timing tool, stainless steel hardware, single fire / dual fire ignition system.

Made In The USA



3757	T/C 88 Cam Cover Kit
------	----------------------

Part #	Retail
3757	\$777.00

Extended Forward Controls Adapter Bracket

Billet Aluminum - With Stainless Steel Hardware

Fits 1984-1999 Softails & Custom Frames

3736	3" Forward, Satin Finish
3736C	3" Forward, Chrome Finish
3737	2" Forward, Satin Finish
3737C	2" Forward, Chrome Finish



Part #	Retail
3736	\$65.00
3736C	\$86.00
3737	\$70.00
3737C	\$90.00

Transmission 5th Bolt Bracket

Billet Aluminum

Used when offsetting transmissions



3712	1/4" Offset
3713	1/2" Offset
3714	3/4" Offset
3715	1" Offset

Part #	Retail
3712	\$21.00
3713	\$21.00
3714	\$21.00
3715	\$21.00

CV Carb Adapter
Billet Aluminum

3150	HRS-42 & OEM CV Carb To 2-Bolt OEM Type Manifold
3416	HRS-42 & OEM CV Carb To S&S 'E' Manifold
3783	Screaming Eagle 44mm CV Carb, To S&S 'E' Manifold
3784	Screaming Eagle 44mm CV Carb, To S&S 'G' Manifold



Part #	Retail
3150	\$22.00
3416	\$26.00
3783	\$26.00
3784	\$26.00

S&S 1" & 3/8" Thick Carb Spacers



Billet Aluminum, O-Ringed Grooved Works with 5 & 6 Gallon Fat Bobs

3105	1"- Super 'B'&'E'
3106	1"- Super 'G'
3164	1"- Super 'D'
3212	3/8"- Super 'B'&'E'

Part #	Retail
3105	\$27.00
3106	\$27.00
3164	\$33.00
3212	\$27.00

Mikuni Hi-Flo Carb Back

**Adapts HRS-42 & 45 Mikuni Carbs
To S&S Manifolds.**

Precision Machined bore, tapers from Mikuni outlet diameter to S&S manifold inlet size.

Substantial flow increase using S&S's larger plenum intake manifold.

Ideal for stroker & big bore motors that require odd length intake manifolds. S&S intake manifolds are available for all length cylinders.

Includes O-Ring & metric hardware.



#3413	HRS-42 Mikuni To S&S Super 'B' & 'E' Manifold
#3414	HRS-45 Mikuni To S&S Super 'B' & 'E' Manifold
#3415	HRS-45 Mikuni To S&S Super 'G' Manifold
#3887	HRS-48 Mikuni To S&S Super 'G' Manifold
#3935	HRS-48 Mikuni To S&S Super 'B' & 'E' Manifold

Part #	Retail
3413	\$86.00
3414	\$86.00
3415	\$86.00
3887	\$86.00
3935	\$99.00

Oil Filter Adapter

Billet Aluminum

Replaces generator on 1936-1969 style motors

3104	Oil Filter Adapter
3104C	Oil Filter Adapter, Chrome

Part #	Retail
3104	\$72.00
3104C	\$90.00



Distributor Drive Gear

For 1936-1969 style B/T motors

Bushings installed & sized

4003	Distributor Drive Gear
-------------	------------------------

Part #	Retail
4003	\$154.00



Oil Filter Stud

3/4-UNF thread

4004	Oil Filter Stud
-------------	-----------------

Part #	Retail
4004	\$10.00



Exhaust Power Cones Machined From 12L15 Billet Steel Bar

3931	Exhaust Power Cone Set
-------------	------------------------

Machined from solid bar stock, and cad plated.

Part #	Retail
3931	\$16.00



Exhaust Flange Kit

Part # **3932** is machined from 12L15 steel plate, not stamped.
Includes snap rings.

Part # **3933** is machined from 303 Stainless steel bar stock,
very accurate & rust free.

3932	Exhaust Flange Kit	Chrome, Steel
3933	Exhaust Flange Kit	Stainless Steel



Part #	Retail
3932	\$21.00
3933	\$28.00

Compression Release

10mm x 1.0 Pitch

Push in blue cap, start motor, once motor starts compression release automatically pops off.

3642	2-7/16" O.A.L
3785	1-13/16" O.A.L
3691	1-7/16" O.A.L.

Part #	Retail
3642	\$25.00
3785	\$22.00
3691	\$22.00



Compression Release

Use With dual plug heads, takes the place of the right side spark plugs. Stainless steel.

3137	14mm Long Reach Set
3398	14mm Short Reach Set
3399	Peanut Plug, 12mm Set Fits Rev Tech Motors

Part #	Retail
3137	\$178.00
3398	\$178.00
3399	\$178.00



PVC Valve Kit

Drill & tap rocker boxes 1/8 ips & block-off crank-case lower vent fitting. Stops oil blow-by. Perfect for large displacement motors.

#3790	PCV Valve Kit Set
-------	-------------------

Part #	Retail
3790	\$44.00



Billet Oil Pump

Billet Aluminum

Housing & cover made from 7075 Billet Aluminum

Gear & Shafts made from 8620 tool steel

No more oil soaked air cleaner

Precision machined check valve seat stops oil from filling crankcase

Eliminates oil blow by

Uses OEM gaskets

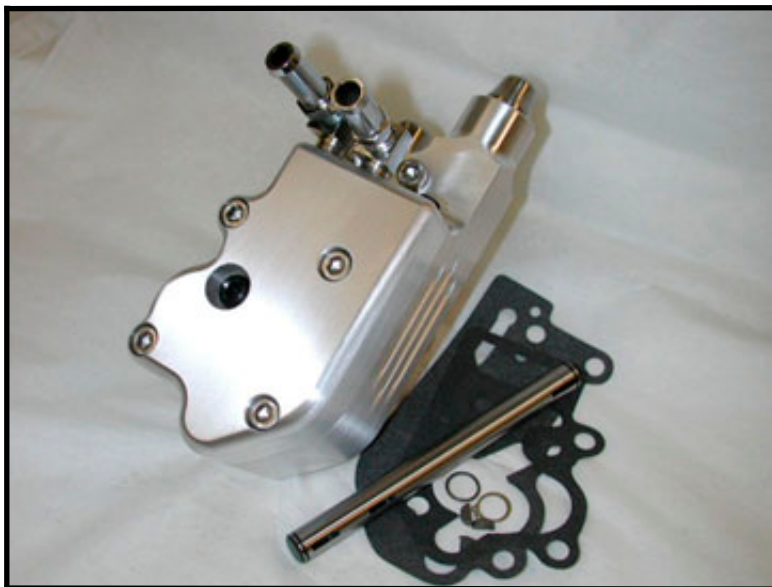


Pumps #3368 & 3369 have larger return side gears for increased scavenge to feed ratio

A Must For Big Inch Motors

Gears are ground for .0005 clearance in housing bore.

Oil pump is sold complete with stainless steel hardware



3368	1992-Up B/T	Hi Scavenge
3553	1992-Up B/T	Stock Replacement
3369	1968-1991 B/T	Hi Scavenge
3552	1968-1991 B/T	Stock Replacement

Part #	Retail
3368	\$272.00
3553	\$199.00
3369	\$172.00
3552	\$199.00

Oil Pump Covers

Billet Aluminum

3354	Use this 1992 style cover on 1968-1991 oil pumps. Perfect for front mounted oil coolers & filters
3555	Use this 68-91 style cover on 92-Up style pumps. perfect when using a new style motor in early frames.



Part #	Retail
3561	\$63.45
3562	\$54.67

Oil Pump Parts, 68-Up B/T



3556	Relief Valve, 82-Up	Rpls. 26400-82
3557	Relief Valve, 54-81	Rpls. 26400-54
3558	Check Ball, All B/T's	Rpls. 8873
3559	Spring, Oil Pump Relief	Rpls. 26207-83
3560	Spring, Oil Pump Check Valve	Rpls. 26262-80

Part #	Retail
3556	\$3.64
3557	\$5.46
3558	\$.30
3559	\$1.50
3560	\$1.50

Oil Pump Parts, 68-Up B/T

Billet Aluminum

3561	Drive Gear, Feed Side	Rpls. 26328-74
3562	Idler Gear, Feed Side	Rpls. 26326-62A
3563	Drive Gear, Return Side	For Vulcan Hi Volume Pump
3564	Idler Gear, Return Side	For Vulcan Hi Volume Pump
3929	Drive Gear, Return Side	Rpls. 26315-68A
3930	Idler Gear, Return Side	Rpls. 26317-68A



Part #	Retail
3561	\$13.66
3562	\$13.66
3563	\$34.43
3564	\$34.43
3929	\$13.66
3930	\$13.66

Oil Pump Shafts

Shafts are made from 4340, heat treated & center less ground. Unlike most after market shafts, the snap ring grooves are machined to the proper depth.



3565	Oil Pump Shaft	Rpls. 26346-70
3566	Oil Pump Shaft	For Vulcan Hi Volume Pump
3567	Idler Gear Shaft	For Vulcan Hi Volume Pump
3568	Idler Gear Shaft	Rpls. 26327-68

Part #	Retail
3565	\$10.93
3566	\$21.87
3567	\$10.93
3568	\$6.37

Twin Cam-88 Adapter Plate

Adapts a T/C-S&S Motor To EVO & Custom Frames

By using this adapter plate, a Twin Cam-S&S motor can be used in any frame designed for a EVO motor. EVO top motor mounts, transmissions, primary drives, & exhaust systems can be used.

- | |
|--|
| (4) 3/8-16 x 2" Long Stainless Steel Cap Screws |
| (2) 3/8-16 x 3-1/4" Long, Socket Head Cap Screws |
| (2) 3/8-16 Stainless Steel Hex Nuts |
| (6) 3/8" SAE, Stainless Steel Flat Washers |
| (6) 3/8" Lock Washers, Stainless Steel |



3960	T/C-88 Adapter Plate Kit
------	--------------------------

Part #	Retail
3960	101.00

Twin Cam-88 Adapter Plate

Adapts a T/C-88 Motor To EVO & Custom Frames.

By using this adapter plate, a T/C-88 motor can be used in any frame designed for a EVO motor. EVO top motor mounts, transmissions, primary drives, & exhaust systems can be used.

- | |
|---|
| (4) 3/8-16 x 2" Long Stainless Steel Cap Screws |
| (2) 3/8-24 x 1-3/4" Long, Grade-8 Cap Screws |
| (2) 3/8-24 Stainless Steel Hex Nuts |
| (6) 3/8" SAE, Stainless Steel Flat Washers |
| (6) 3/8" Lock Washers, Stainless Steel |



3755	T/C-88 Adapter Plate Kit
------	--------------------------

Part #	Retail
3755	\$101.00

FXR Shifter Sleeve
Machined From 6061 Billet Aluminum, With Bronze Bushings

3148 | FXR Shifter Sleeve

Replaces O.E.M. Plastic Sleeve
Stops shifter shaft leaks

Part #	Retail
3148	\$35.00



FXR Offset Motor Mount Kit

Includes:
3/8" offset front FXR motor mount
3/8" thick transmission case spacer

With this kit you mill 3/8" off your rear transmission case. Then add the 3/8" spacer to the opposite side, and install the offset front motor mount. This will offset your motor and transmission 3/8".



4002 | FXR Motor Offset Kit

Part #	Retail
4002	\$99.00

Transmission Base Plate - 5-Speed Softail

3/16" Thick steel plate, fully machined, not stamped

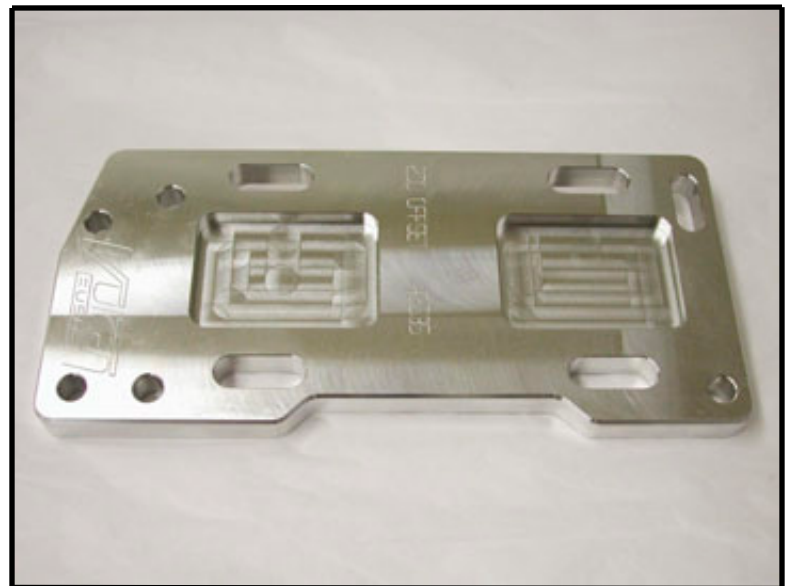
3536	No Offset (Stock)
3537	1/4" Offset
3538	1/2" Offset
3539	3/4" Offset
3540	1" Offset
3801	1-1/4" Offset
3843	1-1/2" Offset



Transmission Base Plate - 5-Speed In A 4-Speed Frame Softail

3/16" Thick steel plate, fully machined, not stamped

3541	Stock (No Offset)
3666	1/4" Offset
3667	1/2" Offset
3669	3/4" Offset
3670	1" Offset
3898	1-1/4" Offset



Transmission Base Plate - 4-Speed B/T

Billet Aluminum

3626	Stock (No Offset)
3535	1/4" Offset
3709	1/2" Offset
3739	1" Offset

Part #	Retail
3536	\$23.70
3537	\$32.80
3538	\$36.45
3539	\$40.00
3540	\$51.00
3801	\$54.67
3843	\$54.67

Part #	Retail
3541	\$54.67
3666	\$54.67
3667	\$54.67
3669	\$54.67
3670	\$54.67
3898	\$54.67

Part #	Retail
3626	\$63.70
3535	\$63.70
3709	\$50.00
3739	\$50.00

Transmission Bearing Support Plate

Made from 7075 Billet Aluminum

Bearing diameters are bored not milled

Will not flex, improves shifting

Replaces 34844-57B

3165	157-1983 XL
------	-------------

Part #	Retail
3165	\$185.00



Transmission Bearing Support Plate

Replaces 34853-86

3155	1986-1990 XL
------	--------------

Part #	Retail
3155	\$185.00



Transmission Bearing Support Plate

Replaces 34847-84

#3166	1984-1985 XL
-------	--------------

Part #	Retail
3156	\$185.00



Transmission Bearing Support Plate

Made from 7075 Billet Aluminum

Bearing diameters are bored not milled

Will not flex, improves shifting

3147	1987-1998 5-Speed B/T
3866	1999-Up W/ 52mm Brg.

Part #	Retail
3147	\$162.00
3866	\$162.00



Transmission Bearing Support Plate

3146	1980-1986 5-Speed B/T
------	-----------------------

Part #	Retail
3137	\$162.00



Transmission Bearing Support Plate

Replaces 25238-90

#3156	1991-Up XL
-------	------------

Part #	Retail
3156	\$185.00



T/C-88 Camshaft Support Plate

3863	Support Plate, Chain Drive
-------------	----------------------------

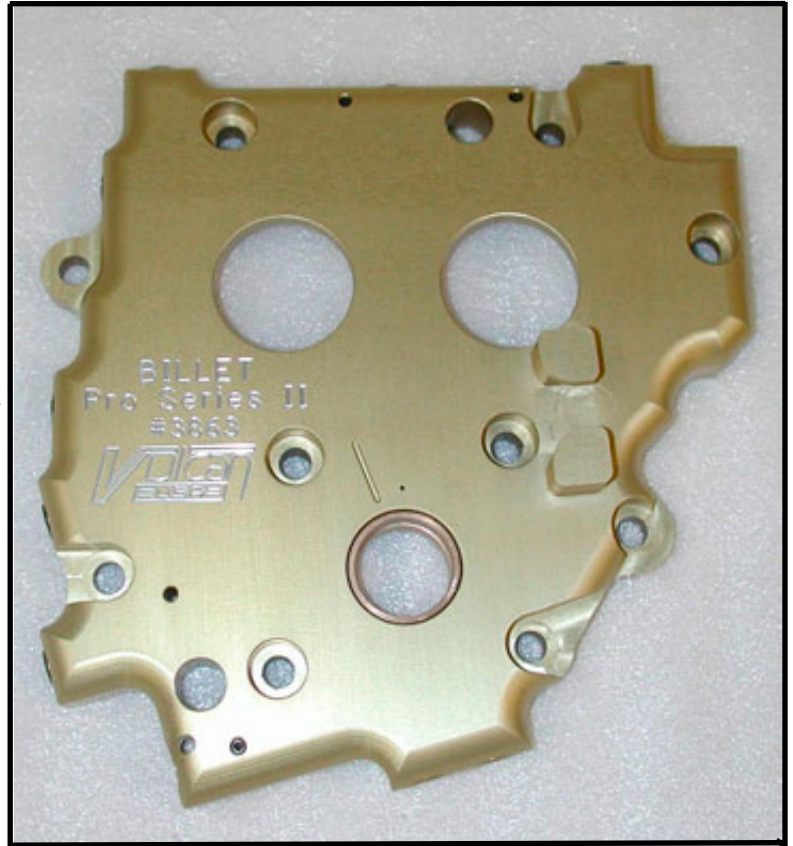
Made from 7075 billet aluminum, & hard coat anodized.

Will not flex or expand & contract as OEM plates do.

All oil ports are drilled & taped for Grade-8 port plugs. Stock plates have pressed in ball bearing plugs that leak.

All edges are radius for extra cam cover clearance.

Oil pump relief valve & spring are included.



Part #	Retail
3863	\$232.00

**T/C-88 Camshaft Support Plate
For Gear Drive Camshafts**

3880	Support Plate	Gear Drive
-------------	---------------	------------



Part #	Retail
3880	\$232.00

Machine Gun Footpegs
Machined From 6061 Billet Aluminum

Footpegs are a 2 peice design so the inner peg can be painted the same color as the bike.

3999 Rear Peg Set, Chromed

Part #	Retail
3999	\$126.00



Footpegs are a 2 peice design so the inner peg can be painted the same color as the bike.

3998 Front Peg set, Chrome

Part #	Retail
4001	\$126.00



Riser Bolt Set
Machine from 4140 Tool Steel,
Chrome Plated

4001 Riser Bolt Set, Chrome

Part #	Retail
4001	\$60.00



Forward Controls Brake Bracket Spacer

Billet Aluminum

Fits All Big Twin Solid Mount Frames

Moves brake pedal assembly outward, to clear pipes and to compensate for thick custom air cleaners.

3732	1/2" Thick
3733	3/4" Thick
3734	1" Thick
3735	1-1/4" Thick



Part #	Retail
3732	\$16.00
3733	\$16.00
3734	\$16.00
3735	\$18.00

Forward Controls Shifter Bracket Spacer

Billet Aluminum

Fits All Big Twin Solid Mount Frames

Needed to ensure proper shifter rod & kickstand alignment when offsetting primary assembly.



3729	1/4" Thick
3730	1/2" Thick
3677	3/4" Thick
3731	1-1/4" Thick

Part #	Retail
3729	\$16.00
3730	\$16.00
3677	\$16.00
3731	\$18.00

Kick Stand Wedges Billet Aluminum

3167	Kick Stand Wedge
-------------	------------------

Raises kick stand assembly on lowered bikes

For all solid mount Big/Twins

Part #	Retail
3167	\$9.00



Kick Stand Wedge

Raises kick stand assembly on lowered bikes

For FLT-FLH-Road Kings
With rubber mounts & floor boards



3632	2" Lower
3633	1" Lower

Part #	Retail
3632	\$18.00
3633	\$18.00



Rear Pulley Spacer Billet Aluminum

Machined from 6061 aluminum bar stock

Pre 1999 pulley spacers
fit 1984 thru 1999
wheels and have a 1.986
locating diameter.

2000 & up pulley spacers
have a 2.208 locating
diameter.

Pre-1999	Thickness	2000-UP	Retail
4007	1/8" Thick	4008	\$14.58
3158	1/4" Thick	3908	\$14.58
3138	5/16" Thick	3910	\$14.58
3159	3/8" Thick	3911	\$21.87
3160	1/2" Thick	3912	\$21.87
4032	9/16" Thick	4033	\$21.87
3889	5/8" Thick	3890	\$21.87
3472	3/4" Thick	3913	\$25.51
3449	7/8" Thick	3914	\$25.51
3891	.900" Thick	3892	\$25.51
3450	1" Thick	3915	\$25.51
3895	1-1/8" Thick	3896	\$27.33
4016	30mm Thick	4017	\$27.33
4012	1-1/4" Thick	4013	\$27.33
4014	1-1/2" Thick	4015	\$29.16
4034	1-3/4" Thick	4035	\$36.45
4036	2" Thick	4037	\$36.45

Pulley Spacer Adapters Billet Aluminum

Adapts 2000 & Up pulleys to 1999 & older wheels.

Adapts 1999 & older pulleys to 2000 & up wheels.

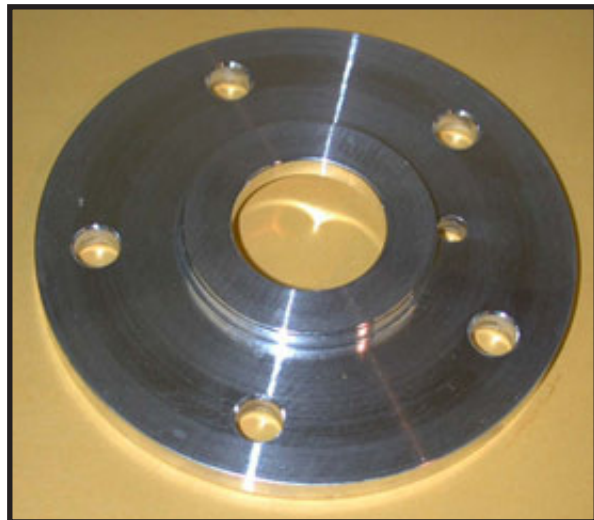
Part #	Thickness	Retail
3982	3/8" Thick	\$21.00
3983	1/2" Thick	\$21.00
3984	5/8" Thick	\$25.00
3985	3/4" Thick	\$25.00
3986	7/8" Thick	\$25.00

Part #	Thickness	Retail
3987	3/8" Thick	\$21.00
3988	1/2" Thick	\$21.00
3989	5/8" Thick	\$25.00
3990	3/4" Thick	\$25.00
3991	7/8" Thick	\$25.00

Front & Rear Brake Rotor Spacers

Billet Aluminum

Part #	Thickness	Retail
3699	Rear- 1/4"	\$14.50
3701	Rear- 5/16"	\$14.50
3702	Rear- 3/8"	\$21.80
3499	Front- 1/4"	\$14.50
3500	Front- 5/16"	\$14.50
3501	Front- 3/8"	\$21.80
3502	Front- 1/2"	\$21.80



Axle Spacers

Part #	Size	Retail
3671	1/4	\$4.50
3721	.287	\$4.50
3509	5/16	\$4.50
3510	3/8	\$4.50
3511	1/2	\$5.40
3720	5/8	\$5.40
3512	.718	\$5.40
3722	3/4	\$5.40
3713-12	.906	\$7.30
3503	1	\$7.30
3723	1.060	\$7.30
3724	1-1/4	\$7.30
3680	1.410	\$9.00
3514	1.437	\$9.00
3504	1-1/2	\$9.00
3515	1.625	\$9.00
3725	2	\$9.00
3672	1-1/4	\$9.00
3716	2-1/2	\$9.00



Made from 1215 alloy steel & flash chrome plated, 1-1/8 OD by 3/4 ID. This is a list of in stock spacers that we carry.

Shaft Extension

4150 Heat Treated Tool Steel

3704	Stock, 91-UP, 1/4" Offset 70-90
3600	1/4" Offset, 91-UP, 1/2" Offset 70-90
3601	1/2" Offset, 91-UP, 3/4" Offset 70-90
3602	3/4" Offset, 91-UP, 1" Offset 70-90
3594	1" Offset, 91-UP, 1-1/4" Offset 70-90



Part #	Retail
3704	\$54.00
3600	\$54.00
3601	\$54.00
3602	\$54.00
3594	\$54.00

Shaft Extension Bolt

Machine Tool Steel



3657	1/4" Longer
3658	1/2" Longer
3659	3/4" Longer
3660	1" Longer

Part #	Retail
3657	\$16.00
3658	\$16.00
3659	\$16.00
3660	\$16.00

Motor Sprockets - Big Twins

Includes heat treat 4150 tool steel sprocket, flat washer and tool steel nut.

3899	1/4" Offset, 24T, 1970-1990
3920	1/4" Offset, 25T, 1970-1990
3464	1/4" Offset, 24T, 91-Up, 1/2 Offset 70-90
3470	1/4" Offset, 25T, 91-Up, 1/2 Offset 70-90
3463	1/2" Offset, 24T, 91-Up, 3/4 Offset 70-90
3471	1/2" Offset, 25T, 91-Up, 3/4 Offset 70-90
3682	3/4" Offset, 24T, 91-Up, 1 Offset 70-90
3596	3/4" Offset, 25T, 91-Up, 1 Offset 70-90
3573	1" Offset, 24T, 91-Up, 1-1/4 Offset 70-90
3585	1" Offset, 25T, 91-Up, 1-1/4 Offset 70-90
3797A	1-1/4" Offset, 25T, 91-Up, 1-1/2 Offset 70-90
3903	1-1/2" Offset, 25T, 91-Up, 1-3/4 Offset 70-90
3992	2" Offset, 25T, 91-Up, 2-1/4 Offset 70-90



Part #	Retail
3899	\$94.00
3920	\$94.00
3464	\$94.00
3470	\$94.00
3463	\$94.00
3471	\$94.00
3682	\$127.00
3596	\$141.00
3573	\$127.00
3585	\$141.00
3797A	\$163.00
3903	\$163.00
3992	\$163.00



Rigid Frame Fender Strut

Billet Aluminum
Chrome Plated

3748	Fender Strut Set
------	------------------

Part #	Retail
3748	\$117.00



Fender Strut Spacers

Billet Aluminum
Chrome Plated

3439A	3/8" Thick	3751	1-3/8" Thick
3440A	1/2" Thick	3752	1-1/2" Thick
3441A	3/4" Thick	3753	1-3/4" Thick
3749	1" Thick	3754	2" Thick
3750	1-1/4" Thick		

Part #	Retail
3439A	\$17.00
3440A	\$17.00
3441A	\$17.00
3749	\$17.00
3750	\$20.00
3751	\$20.00
3752	\$20.00
3753	\$23.00
3754	\$23.00



Fender Strut Spacer Set, 3 Hole

Billet Aluminum
Fits All FXST's

3904	1/8" Thick
3557A	1/4" Thick
3458A	3/8" Thick
3426A	1/2" Thick



Part #	Retail
3904	\$21.50
3557A	\$21.50
3458A	\$21.50
3426A	\$21.50

Fender Strut Spacer Set, 2 Hole

Billet Aluminum
Fits All FXST's



3454	3/16" Thick
3457	1/4" Thick
3458	3/8" Thick
3726	1/2" Thick

Part #	Retail
3454	\$18.00
3457	\$18.00
3458	\$18.00
3726	\$21.50

Fender Strut Spacer Set

Billet Aluminum
Fits All FXR's

3455	1/4" Thick
3728	3/8" Thick



Part #	Retail
3455	\$18.00
3728	\$18.00

Fender Strut Spacer Set

Billet Aluminum
Fits 1958-1984 FX-FLH Frames

3456	1/4" Thick
3727	3/8" Thick



Part #	Retail
3456	\$18.00
3727	\$18.00

T/C-88 Pinion Shaft Bushing

Replaces 25344-99

Made from phosphorus bronze

For camshaft Support Plate



#3772	Pinion Shaft Bushing
-------	----------------------

Part #	Retail
#3772	\$4.38

T/C-88 Timing Tool

Tool inserts into crank angle sensor hole, accurately finds TDC & 34 Degree BTDC crank position.



#3897	Timing Tool
-------	-------------

Part #	Retail
#3897	\$18.00

**Transmission Mainshaft Bearing Race
Installation Tool, 5-Speed B/T's**

Installs primary chaincase bearing race
onto transmission mainshaft

#3421	Primary Chaincase Mainshaft Brg. Race Installion Tool
-------	--



Part #	Retail
3421	\$94.00

Transmission Mainshaft Gear Needle Bearing & Seal Installation Tool



#3419	Main Shaft Gear Needle Brg. & Seal Installation Tool, 91-Up B/T, 91-03 XI
#3420	Main Shaft Gear Needle Brg. & Seal Installation Tool, 1979- 1990 B/T

Part #	Retail
3419	\$21.00
3420	\$21.00

T/C-88 Pinion Bearing Removal-Installation Tool
4150 Heat Treated Tool Steel

Installs pinion shaft bearing to correct depth.

3798	1999-UP T/C 88
------	----------------



Part #	Retail
3798	\$91.00

Timken Bearing Installation Tool
Machined Tool Steel

This tool will install a Timken bearing assembly effortlessly. Has a oversized thrust bearing and is heat treated to last a lifetime.



3298	All B/T's
3299	All XL's

Part #	Retail
3298	\$131.00
3299	\$131.00

**Pinion Shaft Bushing, Installation / Removal Tool
T/C-88 Camshaft Support Plate**

3940	T/C-88 Camshaft Support Plate, Pinion Shaft Bushing, Installation / Removal Tool
------	--

Removes support plate pinion shaft bushing and installs new bushing to correct depth.

Part #	Retail
3940	\$63.00



T/C-88 Camshaft Needle Bearing Tool



Removes and installs engine case camshaft needle bearings.

3939	Needle Bearing Tool
------	---------------------

Part #	Retail
3939	\$34.00

Exhaust Power Cones Machined From 12L15 Billet Steel Bar

3931	Exhaust Power Cone Set
-------------	------------------------

Machined from solid bar stock, and cad plated.

Part #	Retail
3931	\$16.00



Exhaust Flange Kit

Part # **3932** is machined from 12L15 steel plate, not stamped.
Includes snap rings.

Part # **3933** is machined from 303 Stainless steel bar stock,
very accurate & rust free.

3932	Exhaust Flange Kit	Chrome, Steel
3933	Exhaust Flange Kit	Stainless Steel



Part #	Retail
3932	\$21.00
3933	\$28.00



Our parts can be ordered anytime from our
online store: www.vulcanworks.net

-OR-

By faxing your order to 603-626-3882

-OR-

By calling 603-668-6315

